

The Jarrah

3 

2 

2 



Artist impression only

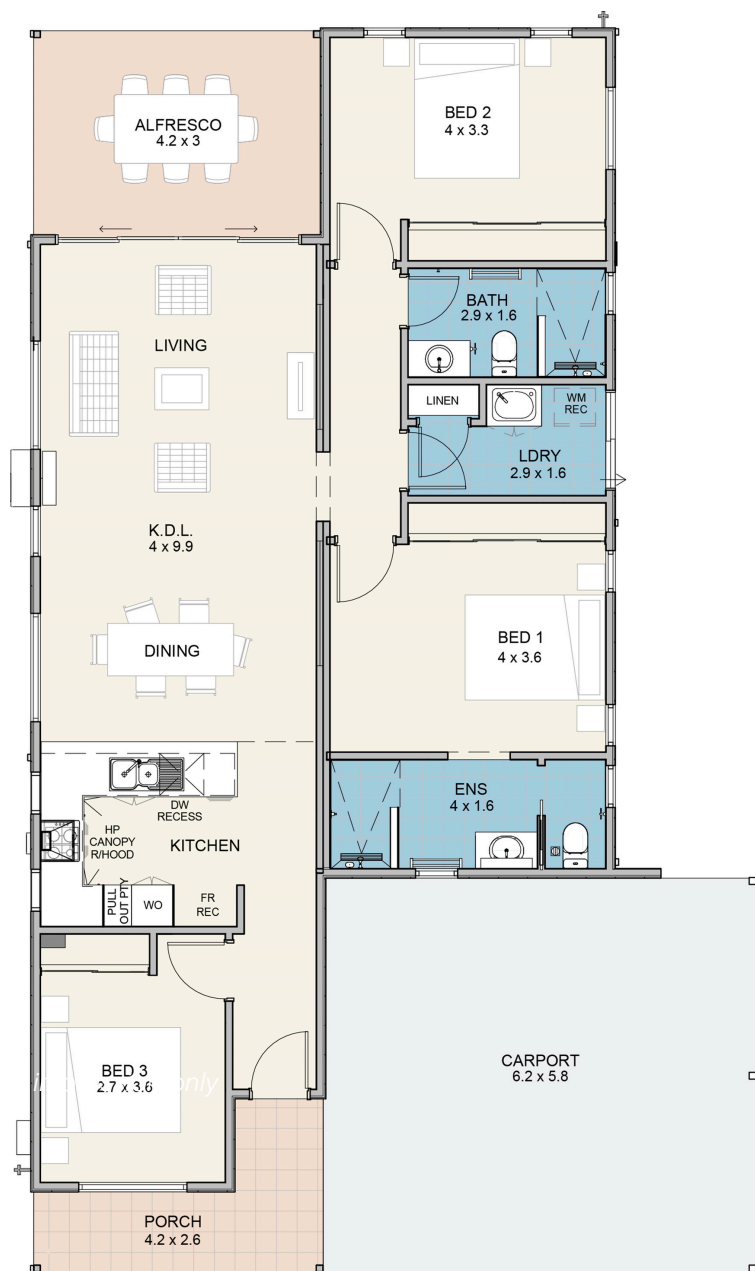
Finished and ready to move in

- ✓ Quality floorcoverings throughout
- ✓ Fully painted inside & out
- ✓ Front landscaping & reticulation
- ✓ Fencing & gates


EDENLIFE[®]
BYFORD

www.edenlife.com.au

The Jarrah

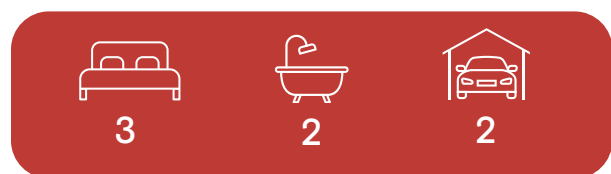


Specifications

House	108m ²
Alfresco	13m ²
Carport	36m ²
Porch	7m ²

Features

- ✓ Contemporary skillion roof design
- ✓ Raked ceiling
- ✓ Reverse cycle split system aircon to living
- ✓ Ceiling fan to Bed 1
- ✓ 600mm hotplate/wall oven & canopy rangehood
- ✓ Stone benchtops
- ✓ Soft close drawers & cupboards
- ✓ LED lighting throughout
- ✓ Heat pump hot water system
- ✓ Vinyl plank flooring throughout
- ✓ Ceramic tiling to wet areas
- ✓ Skirting boards throughout
- ✓ Roller blinds to all opening windows & sliding doors
- ✓ FLYSCREENS to all windows & sliding doors
- ✓ Wall & ceiling insulation
- ✓ Clothesline
- ✓ Garden shed



For further information:

Norm Jones, 0403 626 556

njones@edenlife.com.au

Updated April 2025

Disclaimer: Edenlife reserves the right to change the information in this publication at any time without notice.



EDENLIFE[®]
BYFORD

www.edenlife.com.au