

# The Ibis

2 

1 

1 



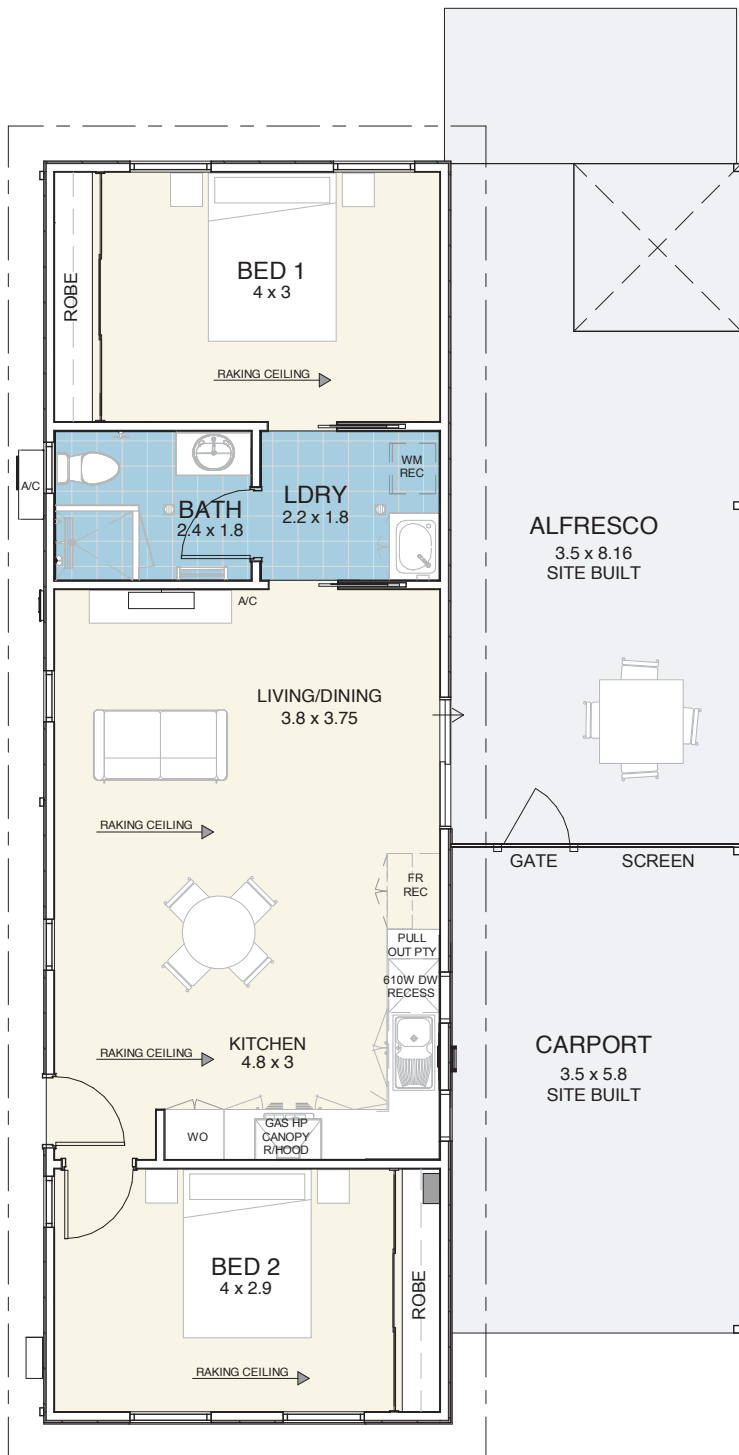
## A place to call home

The two bedrooms at opposite ends of the home allow for comfortable living inside while the generously sized alfresco area makes it perfect for outdoor living and entertaining on a grand scale.



**EDENLIFE**<sup>®</sup>  
AUSTRALIND

# The Ibis



## Specifications

House .....	72m <sup>2</sup>
Alfresco .....	28m <sup>2</sup>
Carport .....	19m <sup>2</sup>

## Features

- Reverse cycle split system air-conditioning unit to living area
- Natural gas hotplate & fan forced electric oven
- Continuous flow hot water unit
- Full internal & external painting
- Built in robes to bedrooms
- Carpet to bedrooms
- Vinyl planking to living areas
- Flyscreens to windows
- Blinds to windows
- LED lighting throughout
- Tiled splashback to kitchen
- Soft close drawers throughout
- Stone benchtops
- Foldaway clothesline
- Full insulation



Updated 6<sup>th</sup> March 2024

Disclaimer: Edenlife reserves the right to change the information in this publication at any time without notice.

For further information

T 08 9423 5131

E live@edenlife.com.au

www.edenlife.com.au



**EDENLIFE**<sup>®</sup>  
AUSTRALIND