

# The Sandpiper



2



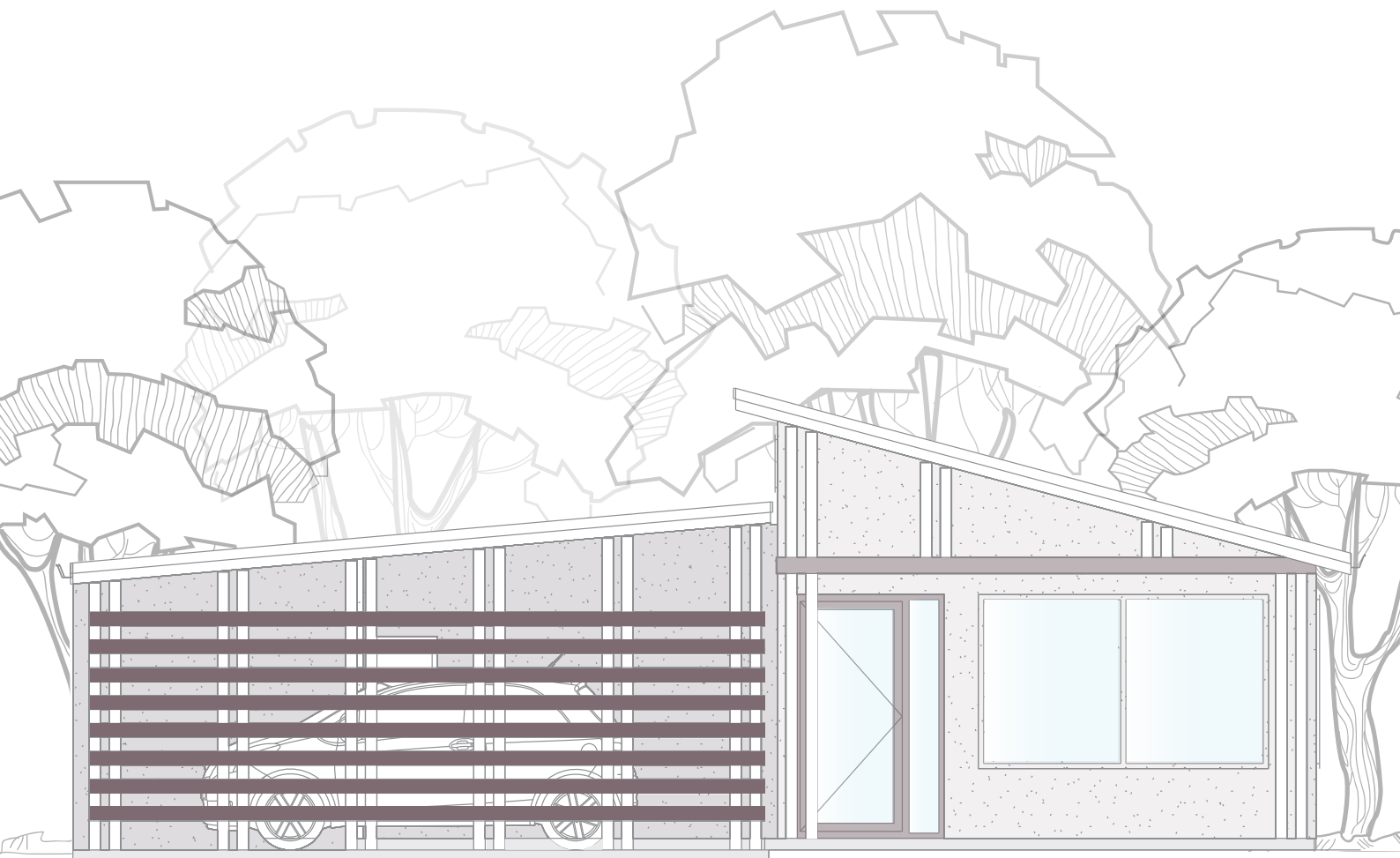
1.5



2



1

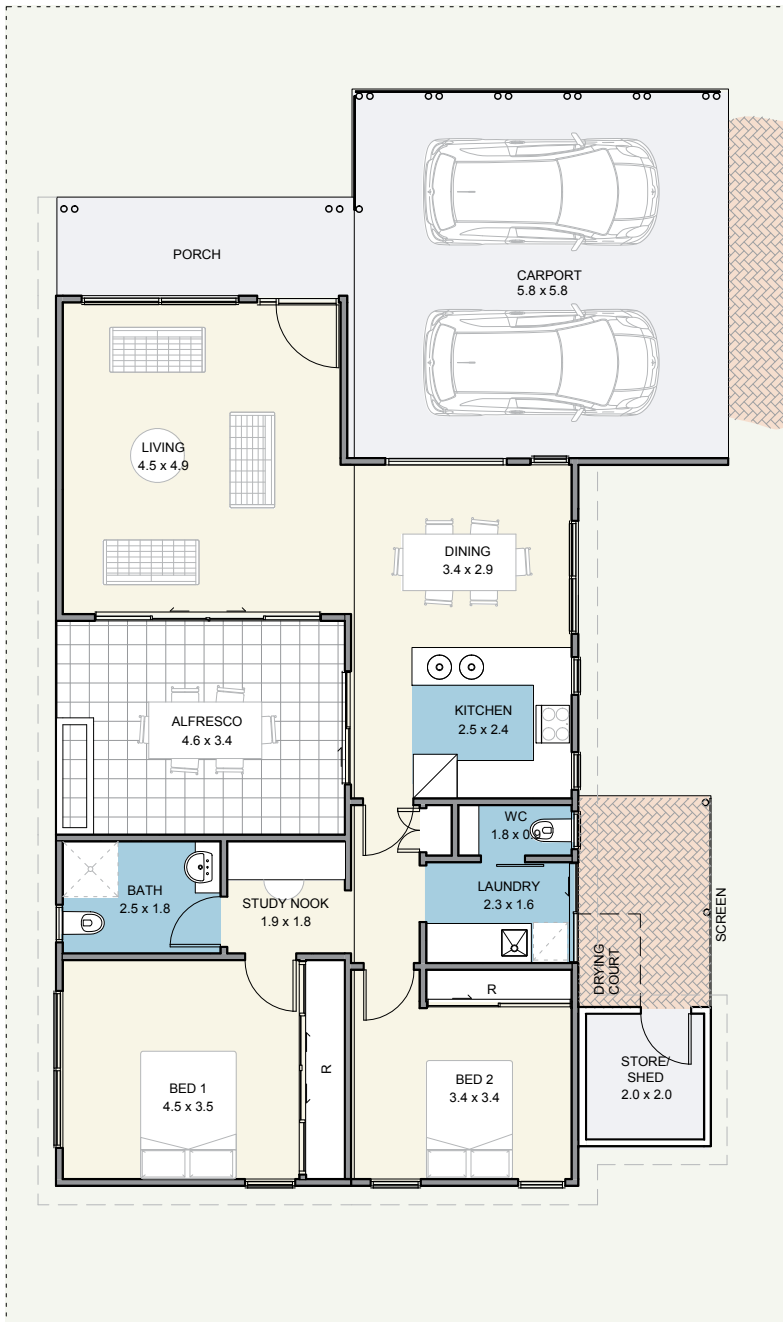


## A place to call home

A compact but functional home, with two bedrooms and a walk through study. The living, kitchen and dining lead out to the alfresco area creating a large open plan living space.

The carport can house two cars and there is a separate large storage area. All the external walls and roof are insulated for protection from the heat and cold.

# The Sandpiper

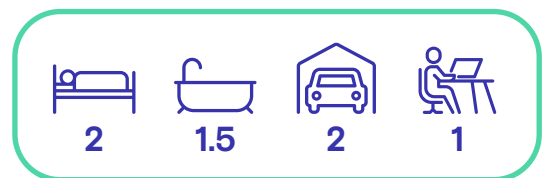


## Specifications

House .....	92m <sup>2</sup>
Alfresco .....	15m <sup>2</sup>
Carport .....	34m <sup>2</sup>
Store/shed .....	4m <sup>2</sup>

## Features

- Reverse cycle air conditioning;
- Built in robes to all bedrooms;
- Natural gas hotplate and fan forced electric oven;
- Carpet to all bedrooms;
- Vinyl planking to living areas;
- Flyscreens to all windows;
- Blinds to all windows;
- LED lighting throughout;
- Tiled splashback to the kitchen;
- Soft-close drawers throughout;
- Stone benchtops;
- Waterwise, fully landscaped and maintained front garden;
- Alfresco entertaining area;
- Foldaway clothes line; and
- Full insulation throughout.



Updated 11<sup>th</sup> August 2020  
 Disclaimer: Edenlife reserves the right to change the information in this publication at any time without notice.

For further information:  
 T: 08 9423 5131  
 E: [live@edenlife.com.au](mailto:live@edenlife.com.au)

[edenlife.com.au](http://edenlife.com.au)

 **EDENLIFE**  
 AUSTRALIND