

The Ibis



2



2



2

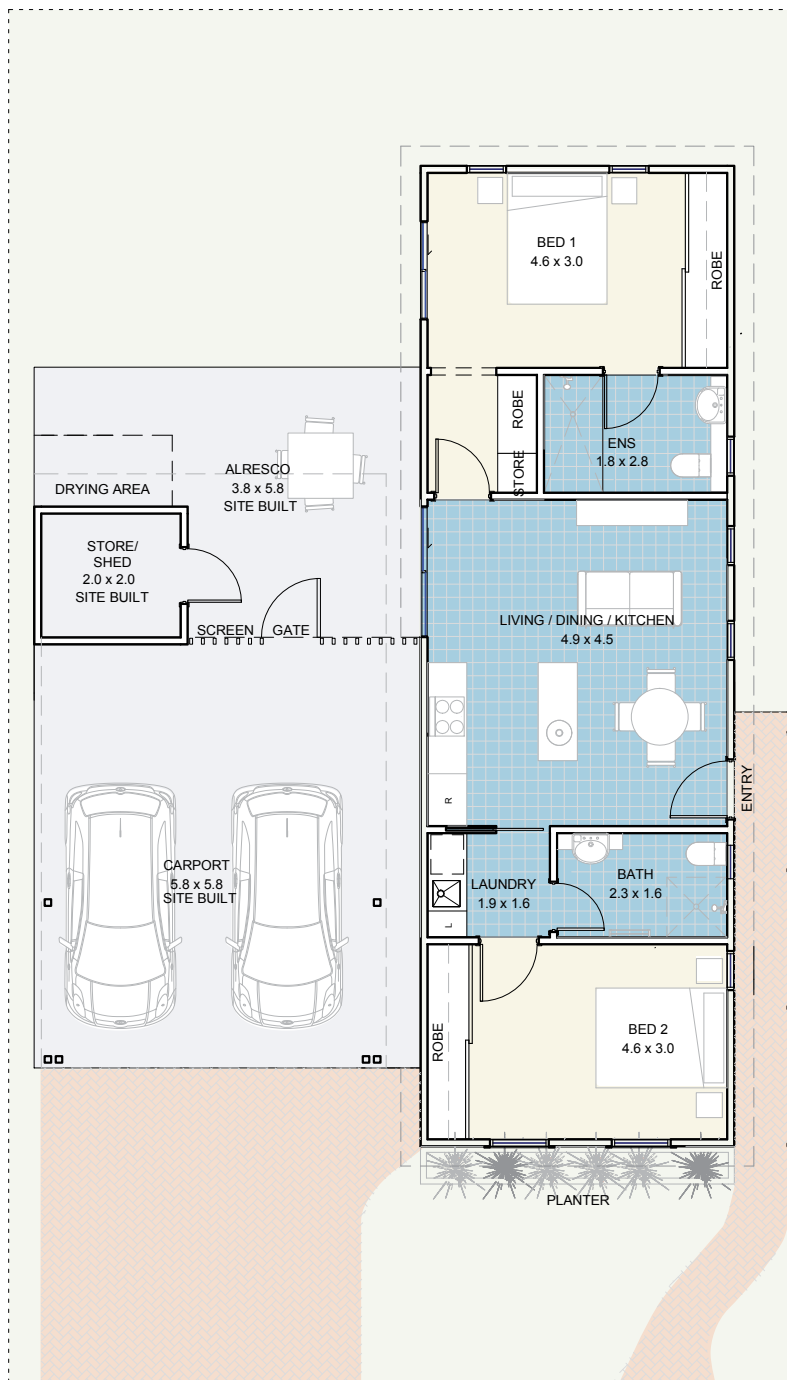


A place to call home

A compact and affordable home. The two bedrooms and two bathrooms at opposing ends of the home allow for comfortable living. The large kitchen, dining and living area rolling out to the alfresco create a modern open feel, perfect for inviting family and friends over.



The Ibis



Specifications

House	72m ²
Alfresco	22m ²
Carport	39m ²
Store/shed	4m ²

Features

- Reverse cycle air conditioning;
- Built in robes to all bedrooms;
- Natural gas hotplate and fan forced electric oven;
- Carpet to all bedrooms;
- Vinyl planking to living areas;
- Flyscreens to all windows;
- Blinds to all windows;
- LED lighting throughout;
- Tiled splashback to the kitchen;
- Soft-close drawers throughout;
- Stone benchtops;
- Waterwise, fully landscaped and maintained front garden;
- Alfresco entertaining area;
- Foldaway clothes line; and
- Full insulation throughout.



Updated 11th August 2020

Disclaimer: Edenlife reserves the right to change the information in this publication at any time without notice.

For further information:

T: 08 9423 5131

E: live@edenlife.com.au

edenlife.com.au



 **EDENLIFE**
AUSTRALIND