

The Harrier



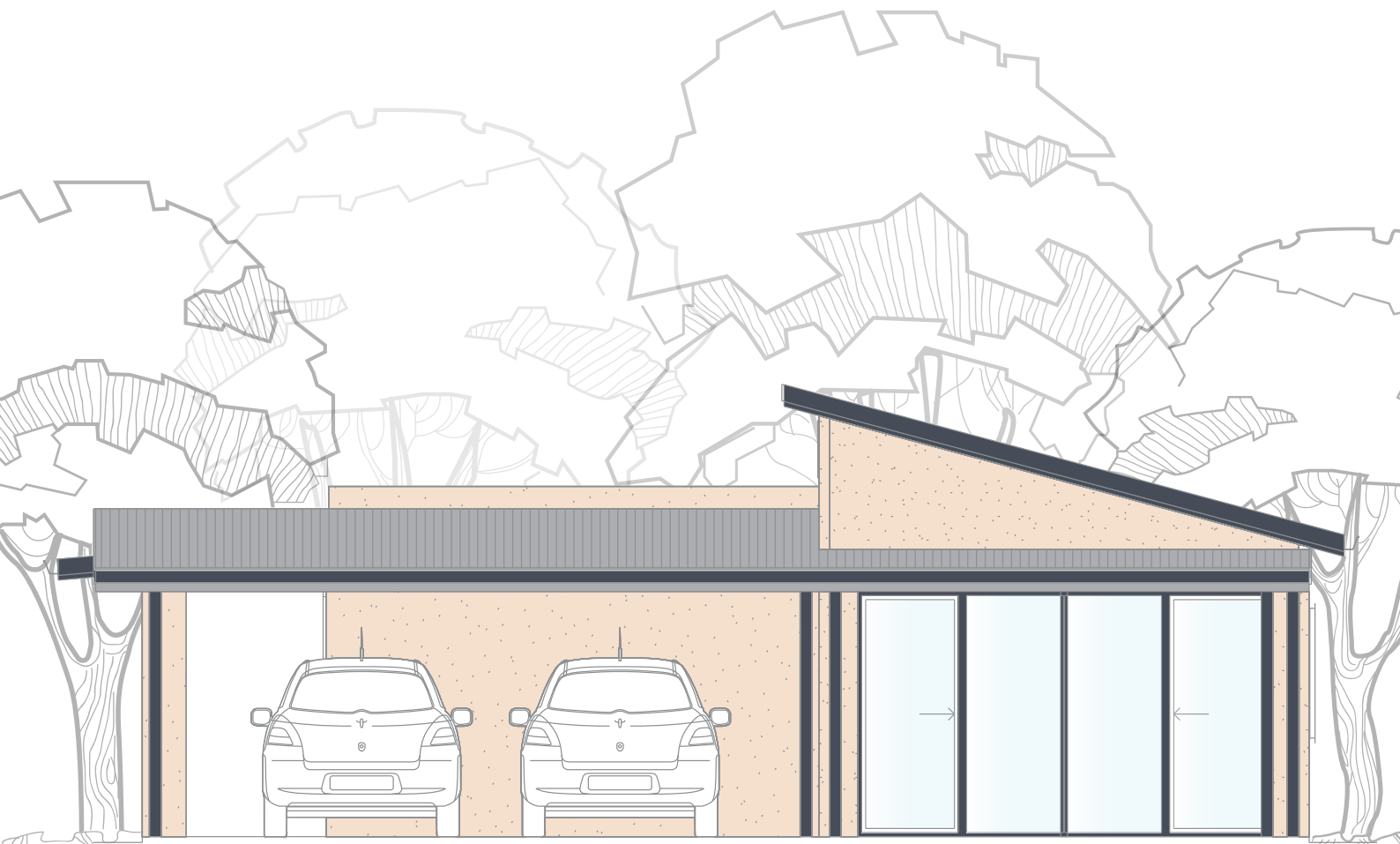
2



1.5



2

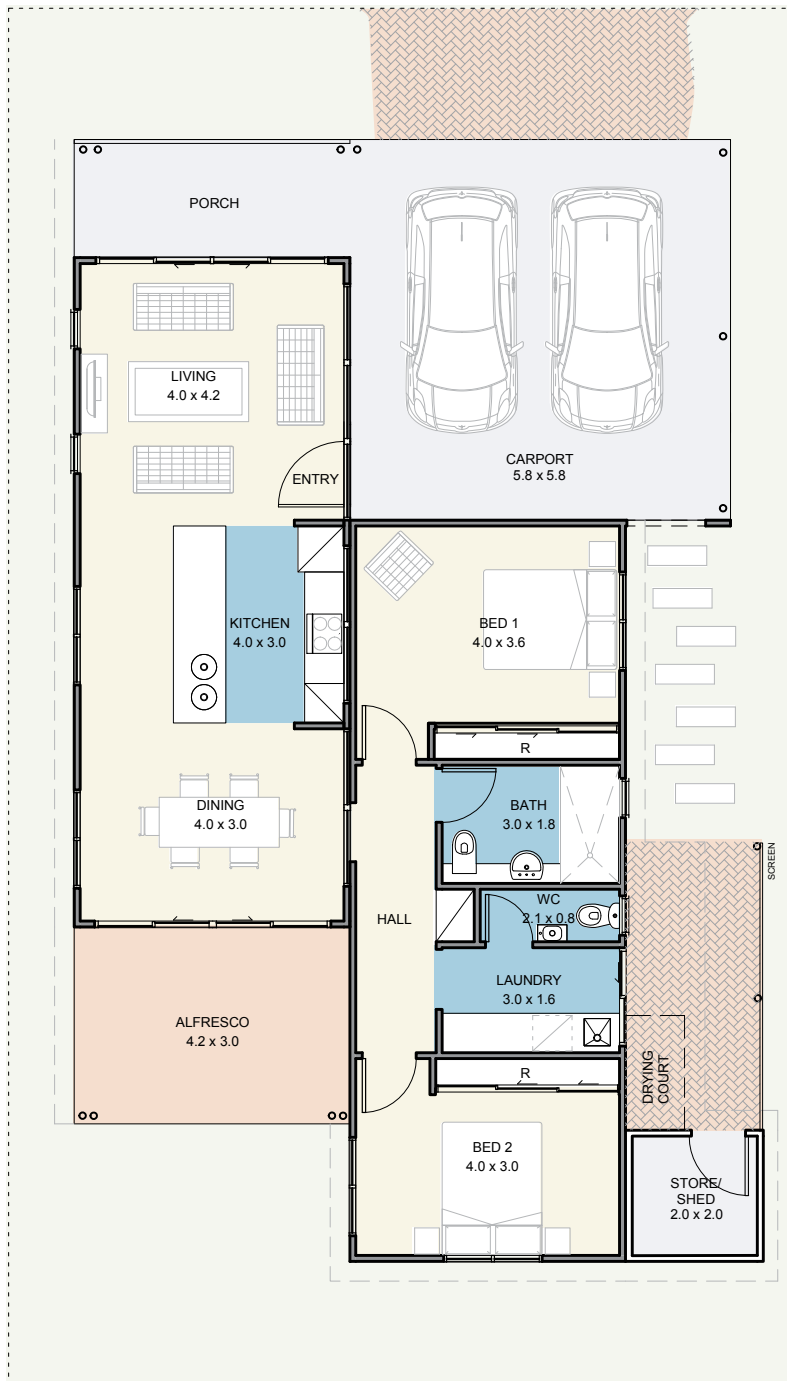


A place to call home

Whilst The Harrier is somewhat compact, it has 2 spacious bedrooms featuring built in robes and 1.5 bathrooms.

The kitchen, featuring splash back tiles with soft close drawers and LED lighting is against a spacious living and dining area creating a homely entertaining area, as it also flows onto the alfresco.

The Harrier



Specifications

House	90m ²
Alfresco	13m ²
Carport	34m ²
Store/shed	4m ²

Features

- Reverse cycle air conditioning;
- Built in robes to all bedrooms;
- Natural gas hotplate and fan forced electric oven;
- Carpet to all bedrooms;
- Vinyl planking to living areas;
- Flyscreens to all windows;
- Blinds to all windows;
- LED lighting throughout;
- Tiled splashback to the kitchen;
- Soft-close drawers throughout;
- Stone benchtops;
- Waterwise, fully landscaped and maintained front garden;
- Alfresco entertaining area;
- Foldaway clothes line; and
- Full insulation throughout.



2



1.5



2

Updated 11th August 2020
 Disclaimer: Edenlife reserves the right to change the information in this publication at any time without notice.

For further information:

T: 08 9423 5131
 E: live@edenlife.com.au

edenlife.com.au 