

The Cormorant



2



2



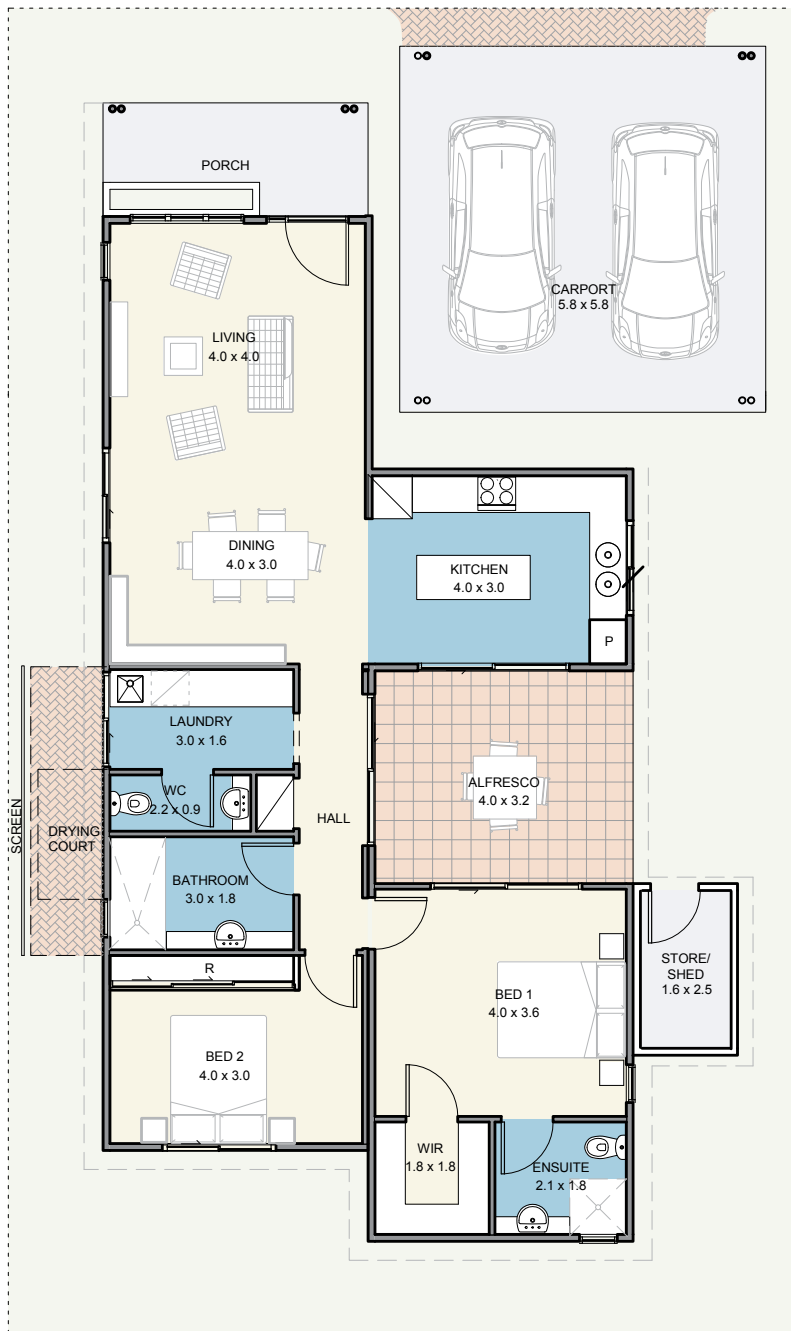
2



A place to call home

With two bedrooms, one including a walk in wardrobe and the other a built in robe, and two full bathrooms, The Cormorant has a comfortably spread layout. The central alfresco area linking to the tiled splash back kitchen, dining and living area creates a modern entertaining area.

The Cormorant



Specifications

House	101m ²
Alfresco	13m ²
Carport	34m ²
Store/shed	4m ²

Features

- Reverse cycle air conditioning;
- Built in robes to all bedrooms;
- Natural gas hotplate and fan forced electric oven;
- Carpet to all bedrooms;
- Vinyl planking to living areas;
- Flyscreens to all windows;
- Blinds to all windows;
- LED lighting throughout;
- Tiled splashback to the kitchen;
- Soft-close drawers throughout;
- Stone benchtops;
- Waterwise, fully landscaped and maintained front garden;
- Alfresco entertaining area;
- Foldaway clothes line; and
- Full insulation throughout.



Updated 11th August 2020
 Disclaimer: Edenlife reserves the right to change the information in this publication at any time without notice.

For further information:
 T: 08 9423 5131
 E: live@edenlife.com.au

edenlife.com.au

